

NOTES:

- MATERIAL:
 - 1-1 HOUSING: LCP, 30% G/F, UL 94V-0, BLACK
 - 1-2 SIGNAL TERMINAL AND DETECT TERMINAL: PHOSPHOR BRONZE
 - 1-3 METAL SHELL: STAINLESS STEEL
- FINISH:
 - 2-1 SIGNAL TERMINAL: 125 MICRON NICKEL MIN UNDER-PLATED, CONTACT AREA SEE TABLE. GOLD FLASH ON SOLDER AREA.
 - 2-2 METAL SHELL: GOLD FLASH PLATED OVER NICKEL ON SOLDER AREA.
 - 2-3 DETECT PIN: 125 MICRON NICKEL MIN UNDER-PLATED, GOLD FLASH ON CONTACT AREA. TIN PLATED ON SOLDER AREA.
- PRODUCT SPECIFICATION: PS-47309-002.
- PACKAGE SPECIFICATION: PK-47309-525.
- PRODUCT COMPLIANT TO RoHS DIRECTIVE 2002/95/EC AND ELV 2000/53/EC.

47309-0525	0.38 MICRON MIN. GOLD	
47309-5251	0.76 MICRON MIN. GOLD	INK
47309-8251	0.1 MICRON MIN. GOLD	
47309-1525	0.76 MICRON MIN. GOLD	LASER
PART NUMBER	CONTACT AREA PLATING	DATE CODE PRINTING TYPE

ADD NEW PART EC NO: SH2012-0261 DRW:GLL CHKD: APPR:AYIN REV:	QUALITY SYMBOLS ▽=0 ▽=0 ▽=0	GENERAL TOLERANCES (UNLESS SPECIFIED) <table border="1"> <tr> <th></th> <th>mm</th> <th>INCH</th> </tr> <tr> <td>4 PLACES</td> <td>± 0.15</td> <td>± 0.006</td> </tr> <tr> <td>3 PLACES</td> <td>± 0.25</td> <td>± 0.010</td> </tr> <tr> <td>2 PLACES</td> <td>± 0.30</td> <td>± 0.012</td> </tr> <tr> <td>1 PLACE</td> <td>± 0.40</td> <td>± 0.016</td> </tr> </table> ANGULAR ± 1°		mm	INCH	4 PLACES	± 0.15	± 0.006	3 PLACES	± 0.25	± 0.010	2 PLACES	± 0.30	± 0.012	1 PLACE	± 0.40	± 0.016	DIMENSION STYLE MM ONLY DRAWN BY: LLIU10 DATE: 2008/11/05 CHECKED BY: WFDENG DATE: 2009/07/19 APPROVED BY: HWWANG DATE: 2009/07/19	SCALE: 1:1 DESIGN UNITS: METRIC THIRD ANGLE PROJECTION	TITLE: 5.25H MICRO-SD HEADER W/DETECT PIN
		mm	INCH																	
	4 PLACES	± 0.15	± 0.006																	
	3 PLACES	± 0.25	± 0.010																	
2 PLACES	± 0.30	± 0.012																		
1 PLACE	± 0.40	± 0.016																		
DRAFT WHERE APPLICABLE MUST REMAIN WITHIN DIMENSIONS	SEE TABLE	MATERIAL NO. SD-47309-525	MOLEX INCORPORATED	DOCUMENT NO.	SHEET NO. 1 OF 2															
SIZE A2	THIS DRAWING CONTAINS INFORMATION THAT IS PROPRIETARY TO MOLEX INCORPORATED AND SHOULD NOT BE USED WITHOUT WRITTEN PERMISSION																			
ADD NEW PART EC NO: SH2012-0261 DRW:GLL CHKD: APPR:AYIN REV:	DESCRIPTION: 2012/02/23																			

10 9 8 7 6 5 4 3 2 1

F

E

D

C

B

A

F

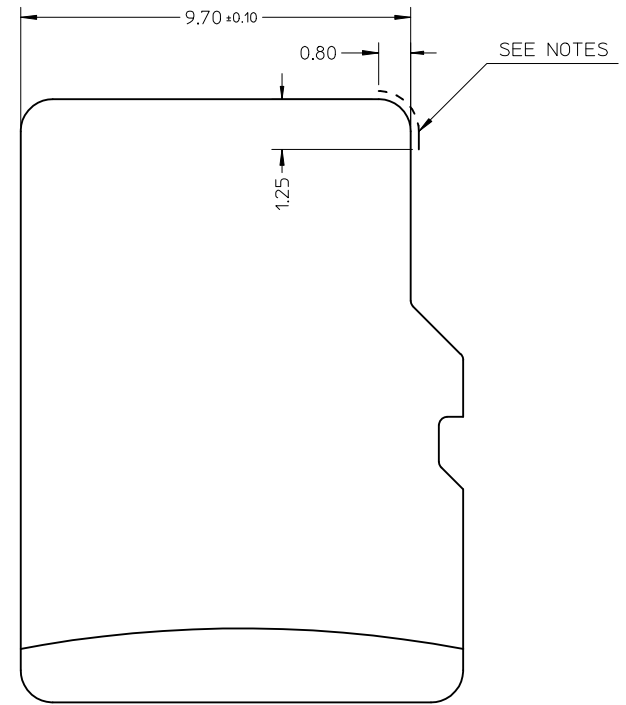
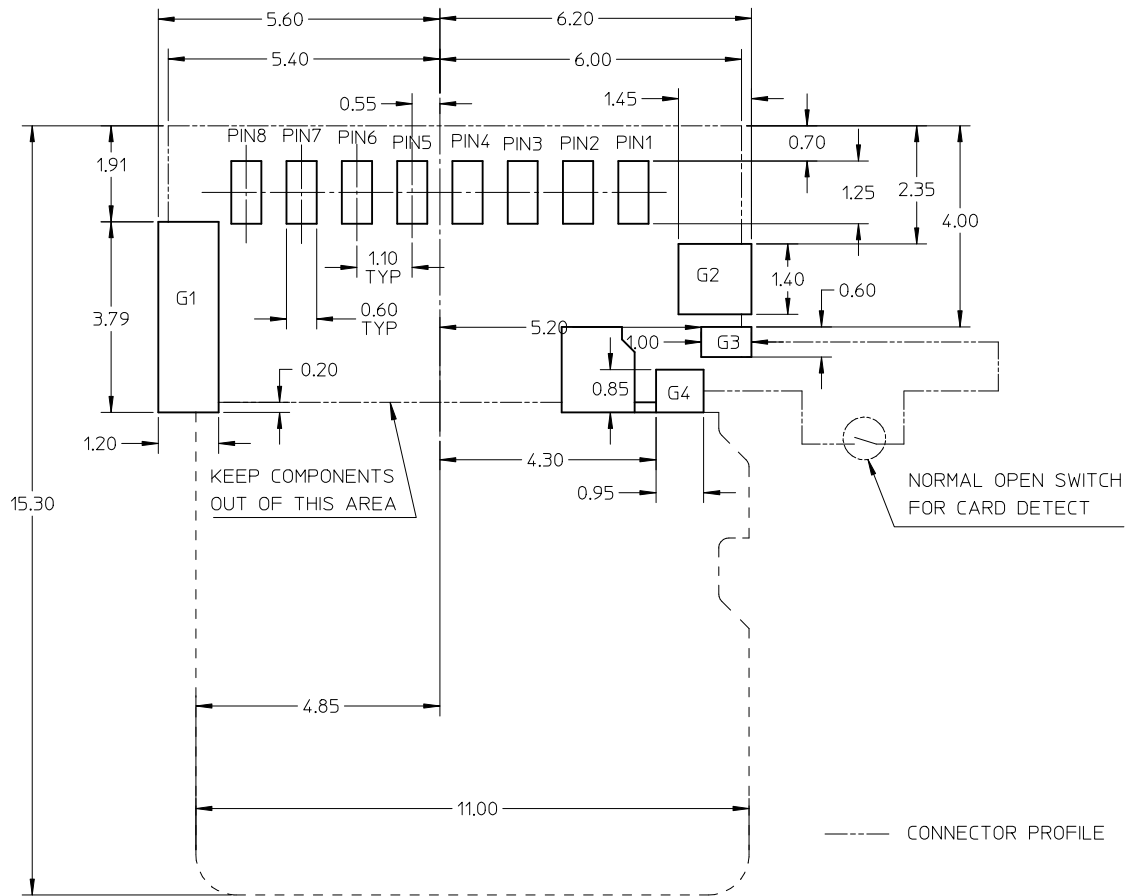
E

D

C

B

A



TFR CARD

--- CONNECTOR PROFILE
 - - - - - CARD PROFILE

NOTES:

NO CONDUCTIVE EXPOSURE TRACE IS ALLOWED ON THE SIDE FACE OF THE CARD AT THIS AREA.

RECOMMENDED PCB LAYOUT
 TOLERANCE FOR PCB LAYOUT: ±0.05

G4	DET
G3	POL
G2	GND
G1	GND
P8	DAT1
P7	DAT0
P6	VSS
P5	CLK
P4	VDD
P3	CMD
P2	CD/DAT3
P1	DAT2
NAME	TYPE
PIN ASSIGNMENT	

SEE SHEET 1 EC NO: SH2012-0261 DRAWN: GLL 2012/02/10 CHK'D: APPR: AYIN 2012/02/23 REV	QUALITY SYMBOLS $F_A=0$ $F_G=0$ $F_P=0$	GENERAL TOLERANCES (UNLESS SPECIFIED) <table border="1"> <tr><th colspan="2">mm</th><th>INCH</th></tr> <tr><td>4 PLACES</td><td>± ---</td><td>± ---</td></tr> <tr><td>3 PLACES</td><td>± ---</td><td>± ---</td></tr> <tr><td>2 PLACES</td><td>± 0.15</td><td>± ---</td></tr> <tr><td>1 PLACE</td><td>± 0.25</td><td>± ---</td></tr> </table>	mm		INCH	4 PLACES	± ---	± ---	3 PLACES	± ---	± ---	2 PLACES	± 0.15	± ---	1 PLACE	± 0.25	± ---	DIMENSION STYLE MM ONLY	SCALE 1:1	DESIGN UNITS METRIC	THIRD ANGLE PROJECTION
	mm		INCH																		
	4 PLACES	± ---	± ---																		
	3 PLACES	± ---	± ---																		
2 PLACES	± 0.15	± ---																			
1 PLACE	± 0.25	± ---																			
DRAFT WHERE APPLICABLE MUST REMAIN WITHIN DIMENSIONS	DRAWN BY LLIU10	DATE 2008/11/05	TITLE 5.25H MICRO-SD HEADER W/DETECT PIN																		
MATERIAL NO. SEE SHEET 1	CHECKED BY WFDENG	DATE 2009/07/19	MOLEX INCORPORATED																		
SIZE A3	THIS DRAWING CONTAINS INFORMATION THAT IS PROPRIETARY TO MOLEX INCORPORATED AND SHOULD NOT BE USED WITHOUT WRITTEN PERMISSION		DOCUMENT NO. SD-47309-525	SHEET NO. 2 OF 2																	

9 8 7 6 5 4 3 2 1