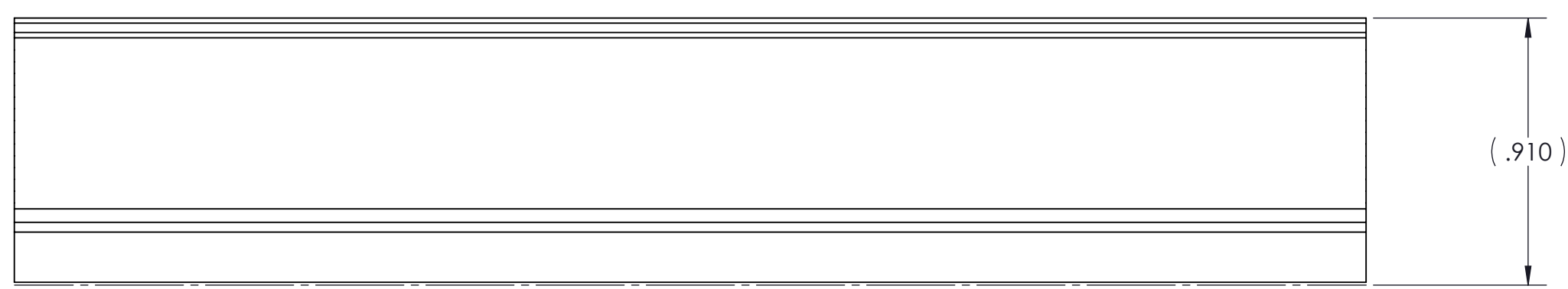
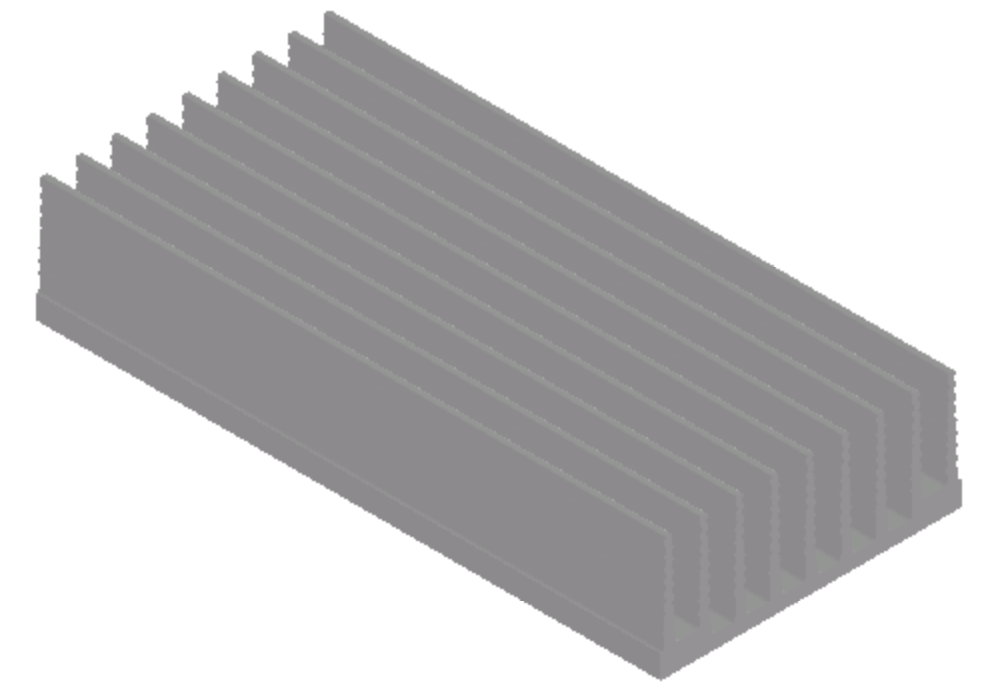
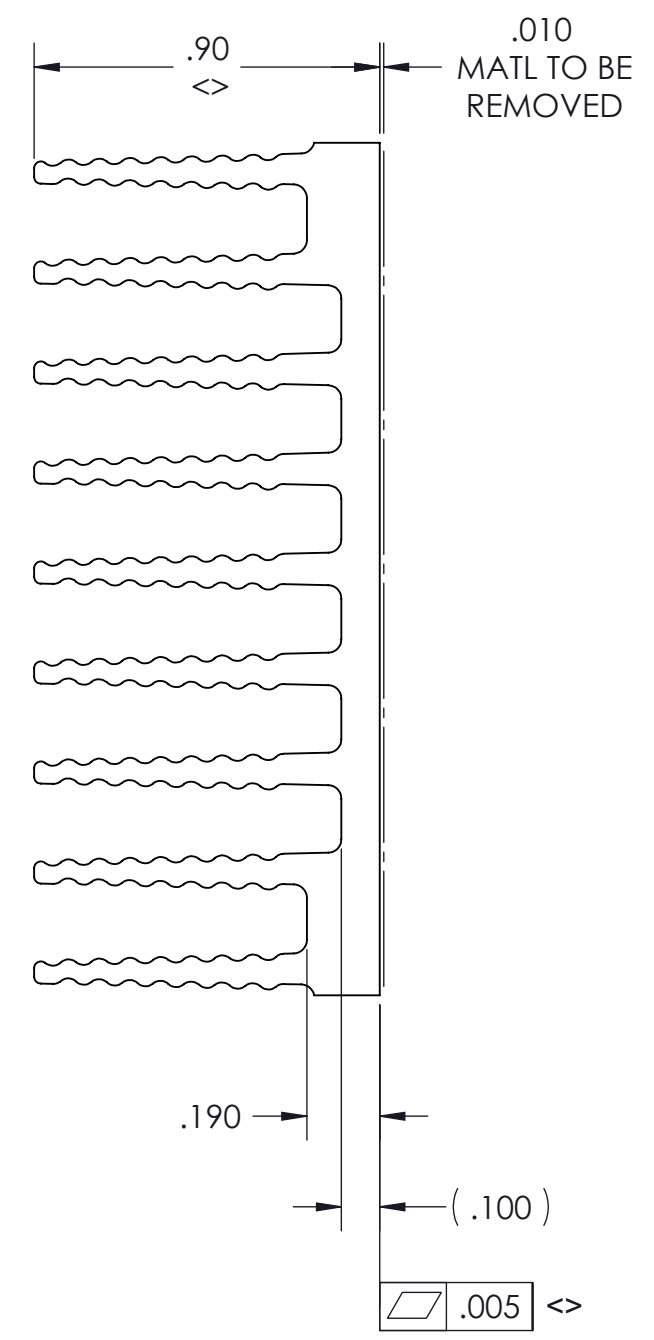
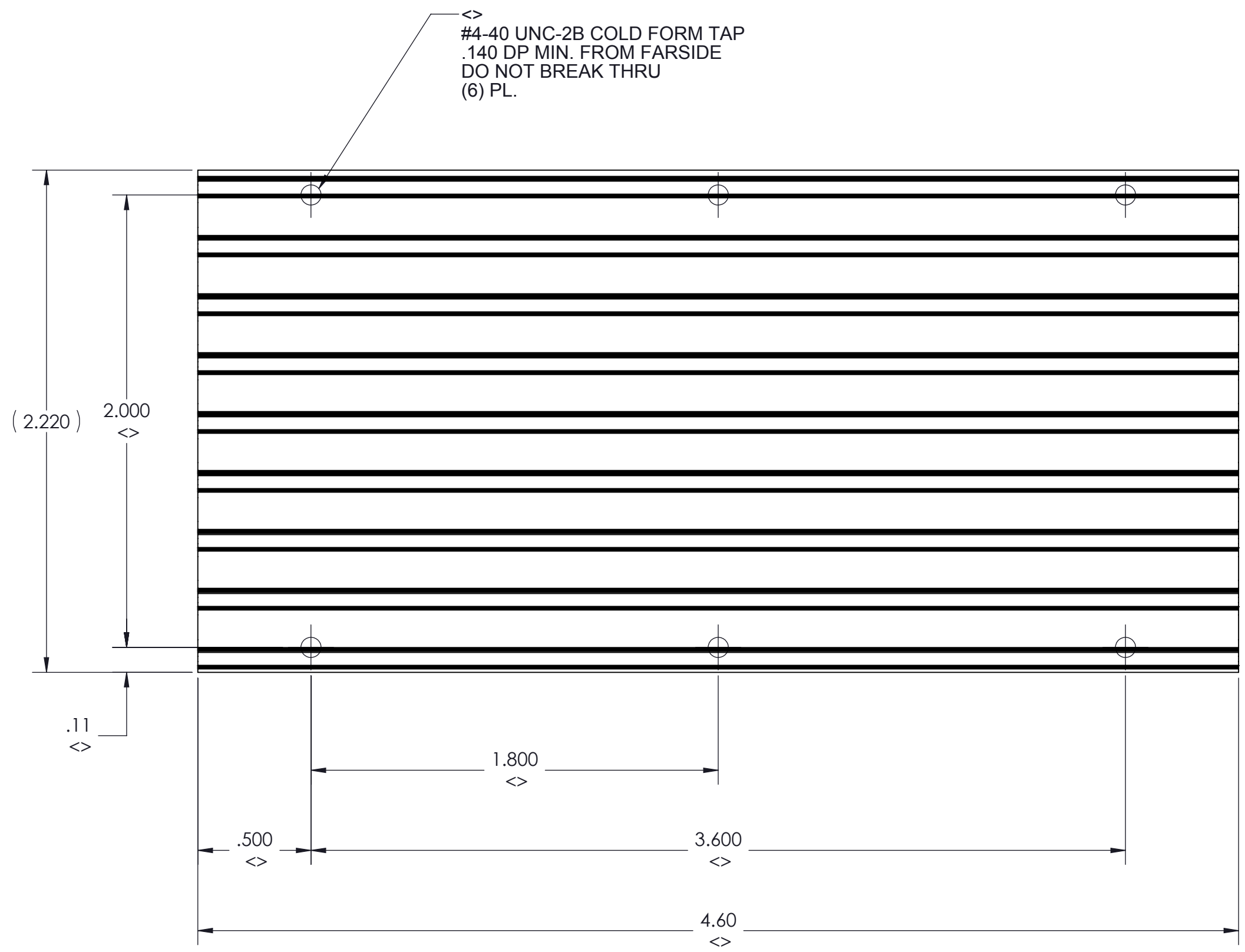



VICOR CONFIDENTIAL  
 THIS DOCUMENT AND THE DATA DISCLOSED HEREIN OR  
 HEREWITH IS NOT TO BE REPRODUCED, USED OR  
 DISCLOSED IN WHOLE OR IN PART TO ANYONE WITHOUT  
 THE PERMISSION OF VICOR CORP.

REV.	DESCRIPTION	DATE	APPROVED
4	RELEASED PER E090033	AR 01/09/09	REJH
5	REVISED PER E092035	JS 11/16/09	REJH
6	REDRAWN PER E100871	DCS 06/31/10	KUK
7	REVISED PER E111266	VSS 12/22/11	REJH



- NOTES:
1. MATERIAL: EXTRUSION SEE SHEET 2 OF 2
  2. REMOVE ALL BURRS AND SHARP EDGES.
  3. CLEAR FINISH, RoHS COMPLIANT PER CST-0001, LATEST REVISION PER  
 A) CHROMIUM FREE, OR  
 B) TRIVALENT CHROMIUM IN ACCORDANCE WITH MIL-DTL-5541, TYPE II, CLASS 1A OR 3.  
 SEE CST-0003 FOR TYPES OF AVAILABLE FINISHES.
  4. "<>" DENOTES CRITICAL CHARACTERISTIC FOR LOT INSPECTION.
  5. DIMENSIONS ARE INCHES ONLY.

DRAWN BY David Schmidt	DATE 06/30/2010	<b>VICOR</b> SWD		
UNLESS OTHERWISE SPECIFIED DIMENSIONS ARE : INCH / (MM)		<b>HTSNK "A" LONG .9H LO FLO THD</b>		
TOLERANCES ARE: DECIMALS ±0.01 (0.25) X.XXX [X.X] ±0.005 (0.127)		SIZE <b>C</b>	CAGE CODE <b>67131</b>	DWG NO <b>30188</b>
THIRD ANGLE PROJECTION  DO NOT SCALE DRAWING		SCALE 1:1	REV <b>7</b>	SHEET 1 OF 2

8

7

6

5

4

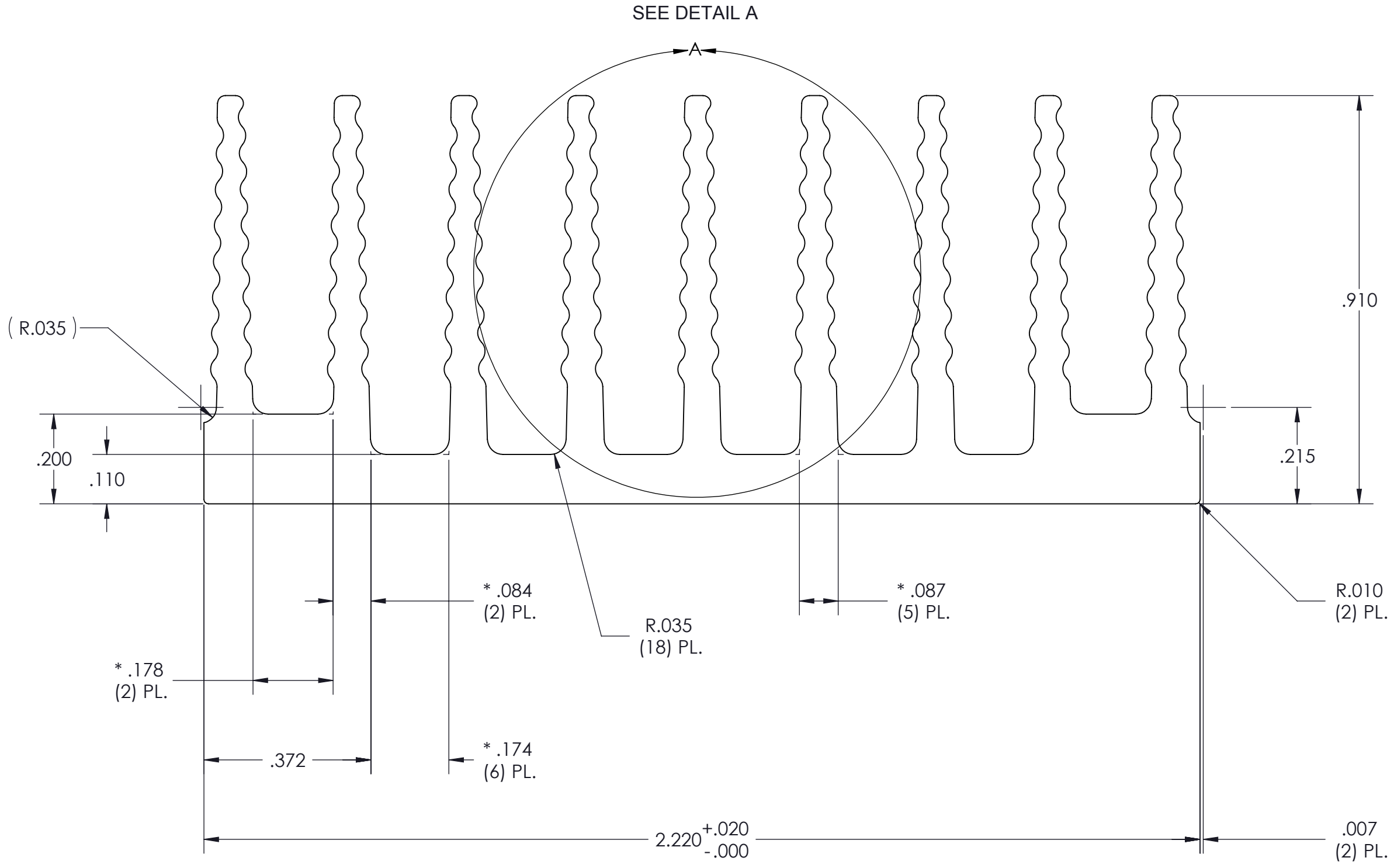
3

2

1

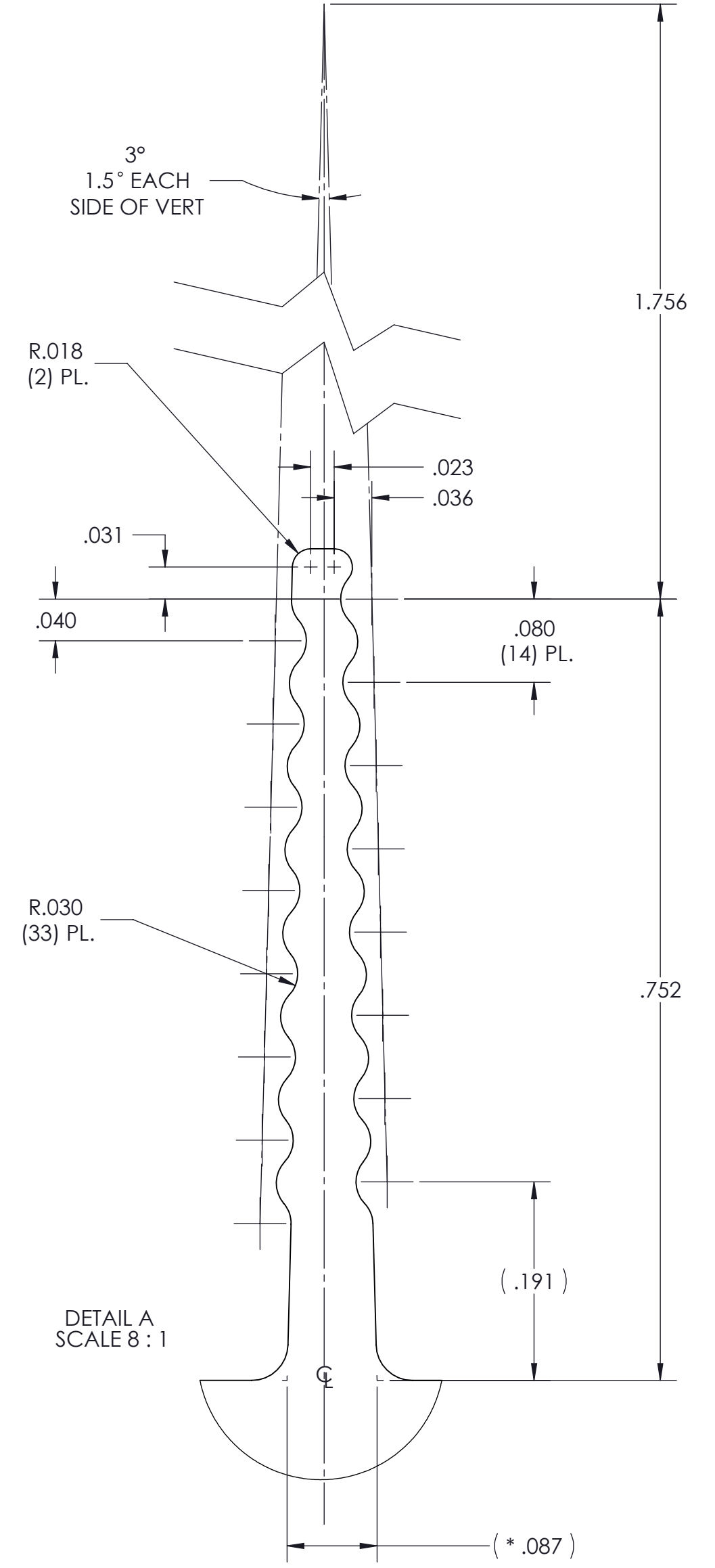
VICOR CONFIDENTIAL  
 THIS DOCUMENT AND THE DATA DISCLOSED HEREIN OR  
 HEREWITH IS NOT TO BE REPRODUCED, USED OR  
 DISCLOSED IN WHOLE OR IN PART TO ANYONE WITHOUT  
 THE PERMISSION OF VICOR CORP.

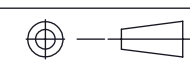
REV.	DESCRIPTION	DATE	APPROVED
	SEE SHEET 1 OF 2		



PROFILE COMMON FOR
30123
30181
30189
30182
30188

- NOTES:
1. MATERIAL: ALUMINUM 6063-T5
  2. \* DENOTES DIMENSION TO THEORETICAL SHARP CORNER.
  3. ALL DIMENSIONS ARE CRITICAL CHARACTERISTICS.
  4. RoHS COMPLIANT PER CST-0001 LATEST REVISION.
  5. WORKMANSHIP STANDARDS WS-0004, WS-0006, AND WS0007 APPLY TO THIS PART.
  6. DIMENSIONS ARE INCHES ONLY.



DRAWN BY David Schmidt	DATE 06/30/2010	<b>VICOR</b> SWD			
UNLESS OTHERWISE SPECIFIED DIMENSIONS ARE : INCH / [MM]		<b>HTSNK "A" LONG .9H LO FLO THD</b>			
TOLERANCES ARE: DECIMALS                      ANGLES X.XX [X.X] = ±0.01 [0.25]                      ±1° X.XXX [X.XX] = ±0.005 [0.127]		SIZE <b>C</b>	CAGE CODE <b>67131</b>	DWG NO <b>30188</b>	REV <b>7</b>
THIRD ANGLE PROJECTION 		SCALE 1:1		SHEET 2 OF 2	

8

7

6

5

4

3

2

1