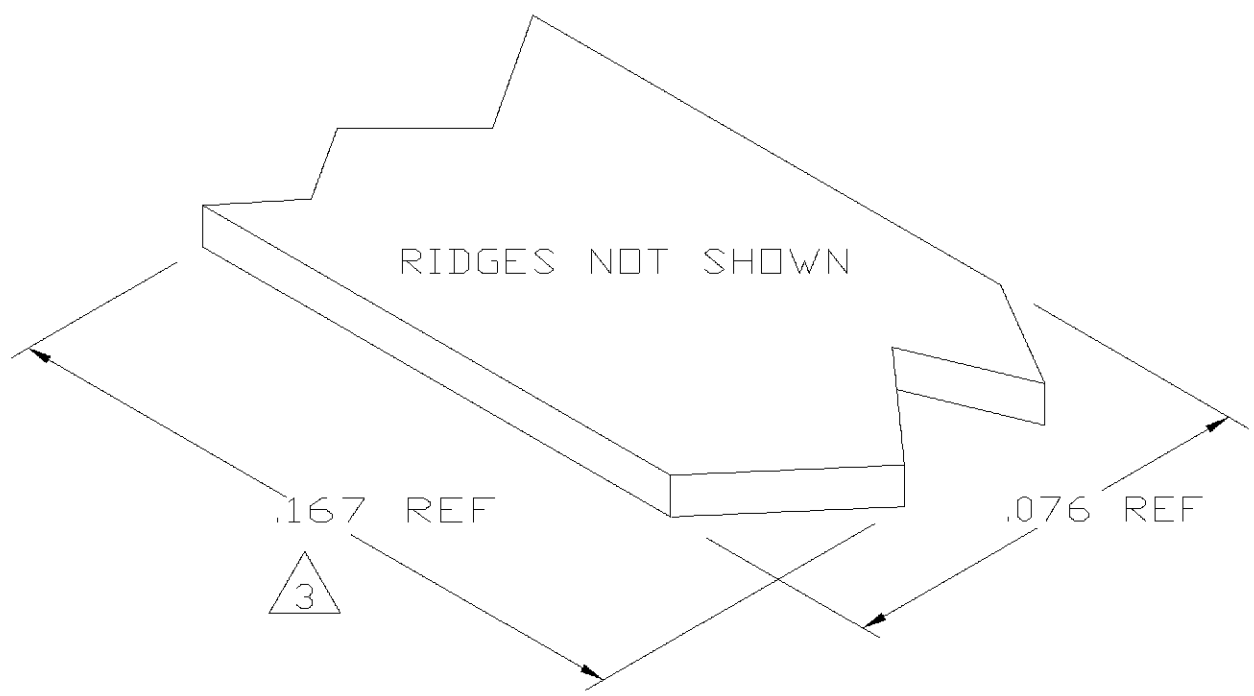
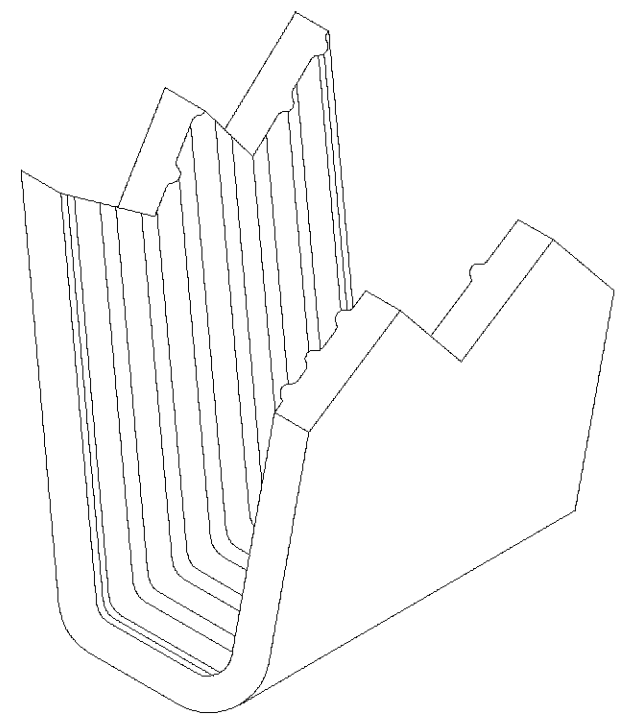
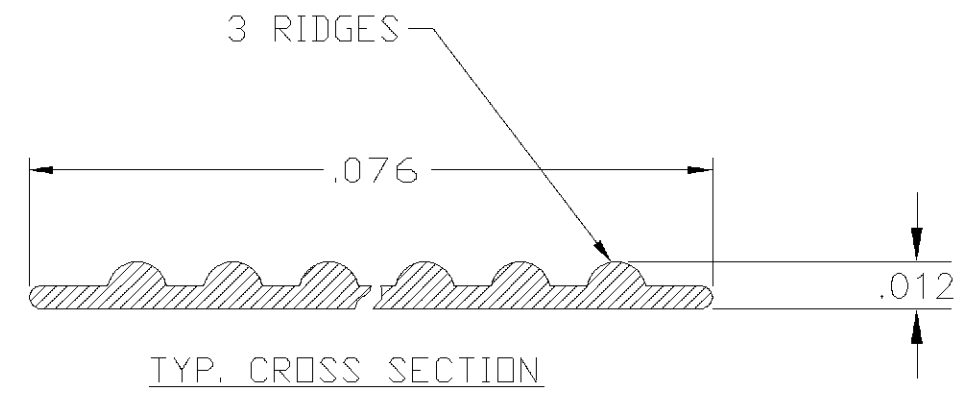


THIS DRAWING IS UNPUBLISHED. RELEASED FOR PUBLICATION
 © COPYRIGHT BY TYCO ELECTRONICS CORPORATION. ALL RIGHTS RESERVED.

| LOC | DIST | REVISIONS | | | |
|-----|------|-------------|---------------------------|---------|----------|
| P | LTR | DESCRIPTION | DATE | DWN | APVD |
| AF | 50 | 0 | TRANSFERED TO TYCO FORMAT | 08MAY02 | MF EH |



- 1 CRIMPBAND MATERIAL PROVIDED IN CONTINUOUS STRIP.
 - 2 REFERENCE DESCRIPTIVE PART NUMBER L032B12B.
- 3 BLANK LENGTH DETERMINED BY 032 TOOLSET.



PARTIAL FORMED VIEW (REF)
 FORMED BY APPLICATION TOOLING

1601555-1
 PART NUMBER

| | | | | | |
|--|--|--------------------------------------|---|-----------|------------|
| THIS DRAWING IS A CONTROLLED DOCUMENT. | | DWN MICHAEL S. FEHER 08MAY2002 | Tyco Electronics Corporation Harrisburg, PA 17105-3608 | | |
| DIMENSIONS: INCHES | TOLERANCES UNLESS OTHERWISE SPECIFIED: | CHK EDWARD HOWARD 08MAY2002 | NAME - | | |
| | 0 PLC ± - | APVD EDWARD HOWARD 08MAY2002 | PRODUCT SPEC - | | |
| | 1 PLC ± - | | APPLICATION SPEC - | | |
| | 2 PLC ± - | | SIZE | CAGE CODE | DRAWING NO |
| | 3 PLC ± .005 | | A3 | 00779 | C-1601555 |
| | 4 PLC ± - | | RESTRICTED TO - | | |
| | ANGLES ± - | | SCALE 1:1 SHEET 1 OF 1 REV 0 | | |
| MATERIAL UNS C26000 BRASS | FINISH NONE | WEIGHT - | CUSTOMER DRAWING | | |