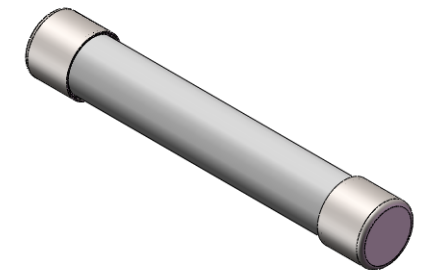
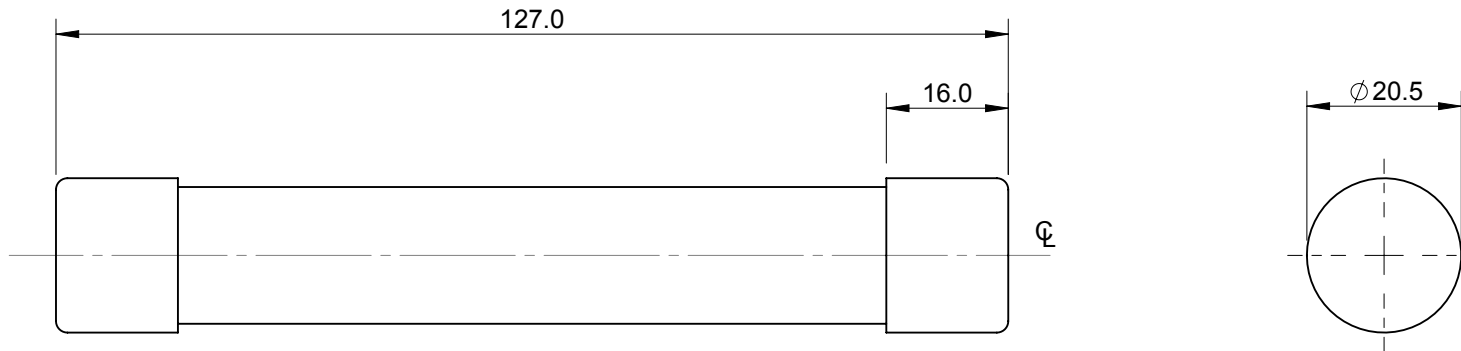



REV	DESCRIPTION	BY	DATE	CHANGE NO.
C	DRAWING UPDATED WITH EATON TEMPLATE	EDK	14/05/2016	BUEI4519



CATEGORY OF DUTY : - 1000Vd.c

MODEL VERSION: 00	UNLESS OTHERWISE SPECIFIED, ALL DIMENSIONS ARE IN MILLIMETERS.		TITLE				 <i>Powering Business Worldwide</i>
	TOLERANCES UNLESS OTHERWISE SPECIFIED: GENERAL $\pm 0.4\text{mm}$ ANGULAR $\pm 1^\circ$		OUTLINE FOR SRF1000 FUSE LINKS (2-30A)				
MODEL SOURCE FILE: 5778871	UNCONTROLLED COPY		DRAWN BY: RAG	DATE: 14/06/2013	SCALE: NTS	ANGLE: THIRD	SIZE: A4
	THIS DRAWING IS CONFIDENTIAL AND THE COPYRIGHT OF EATON AND MUST NOT BE COPIED OR PASSED ON TO A THIRD PARTY WITHOUT WRITTEN CONSENT		MATERIAL: VARIOUS		FINISH: NONE		
DWG NO: 5778871					REV: C	SHEET: 1 OF 1	